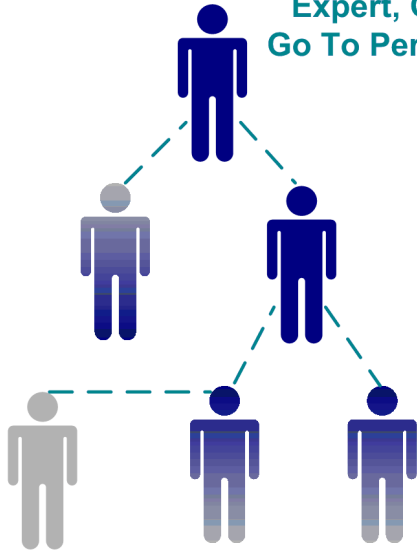


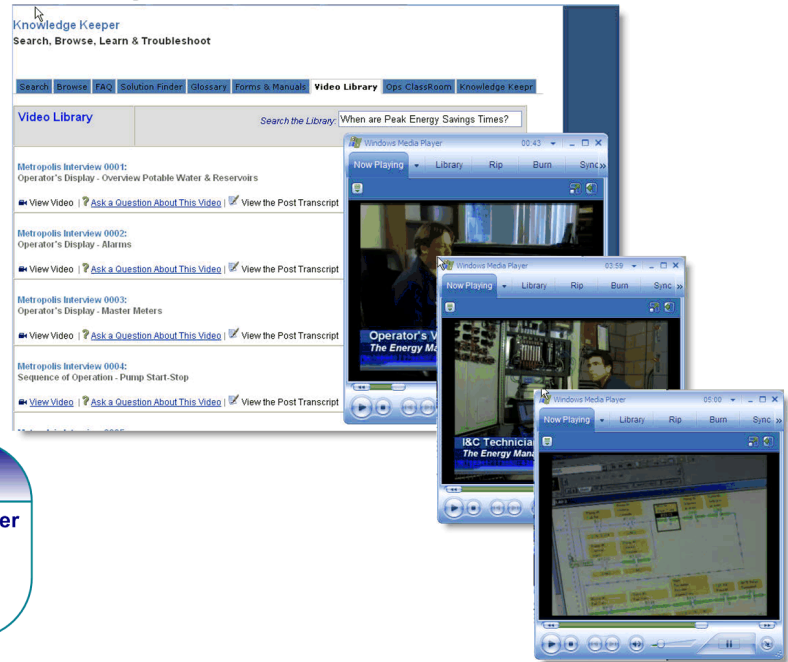
# How Does Your Company Transfer Knowledge?

Expert, Guru,  
Go To Person....



## KnowledgeKeeper

Knowledge Capture & Transfer



Knowledge Keeper is a hosted on-demand application for capturing, managing and transferring unwritten knowledge. Need help capturing institutional knowledge? OpCon will work with a map of your business processes and provide production services for rapid on-the-job video knowledge capture from your experts.

**Capture Aging Workforce Knowledge**  
**Accelerate & Track Knowledge Transfer Paths**



## Features

- Question & Answer Search**  
Captured video knowledge is organized and stored in a searchable context. *Search*. Ask questions and view answers in text form. Click on the text and be taken to that part of the video
- FAQ & Glossary**  
Frequently Asked Questions (*FAQ's*) are derived and stored in a centrally organized area for quick answers that should not require a search. *Glossaries* of company acronyms and terms are also quickly accessible. Unit conversion, Flow change, and other easy to use Calculators are at your fingertips
- Ask-a-Question**  
An Expert Locator *Ask-a-Question(?)* routes new questions about knowledge and practices back to the experts in the videos. After the answers are verified and put into practice the written transcripts and good practices are updated.
- Good Practices**  
*Good practices* that are used to fulfil a business process are distilled and centrally organized. Process improvements are made and added. Reuse of proven good practices reduces mistakes and improves operational control.
- 911-EOC Emergency Operations Center**  
*911-EOC* is a listing of facilities with pre-disaster videos of facility operational status. 911-EOC also includes GPS location and status assessments for each facility including - Operational Status, Remaining Outage Time and Generator Status. Optional real time video streaming can also be added for mission critical facilities. 911-EOC enables mutual aid providers to quickly review normal operational control and input immediate real time assessments from the field via cell or satellite phone